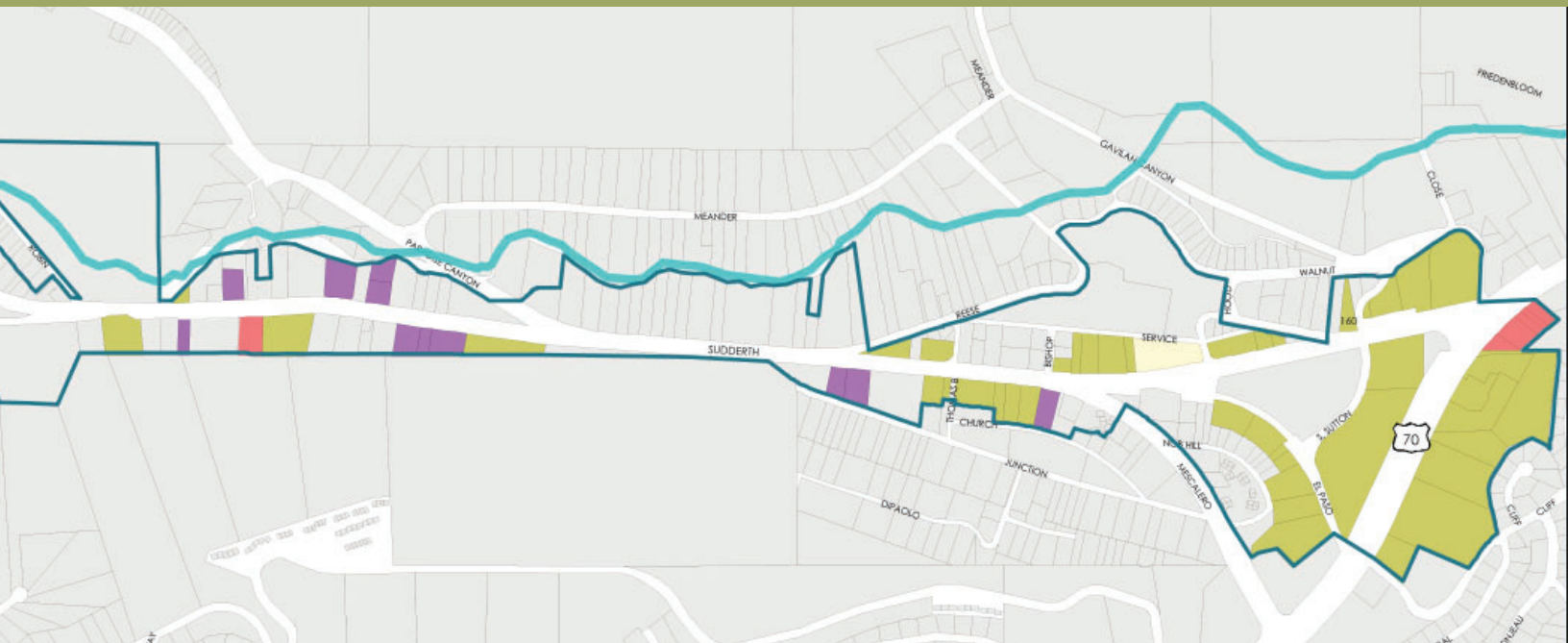


# Ruidoso Sudderth Corridor MRA Plan



**CLIENT:** Village of Ruidoso

Sites Southwest has completed a designation report and MRA plan for a 2.5 mile stretch of Sudderth Drive in Ruidoso, New Mexico. This commercial corridor includes Ruidoso's iconic Midtown District as well as gateway areas east and west of Midtown. This corridor is the economic lifeblood of the Village. The corridor is primarily commercial, with retail, services, lodging and office along its length. Goals for redevelopment include expanding allowable uses through zoning ordinance revisions, utilizing Village owned properties to support housing and economic development, and improving the physical appearance of the corridor through streetscape improvements and addressing vacant and deteriorating buildings and sites. Pedestrian improvements are also proposed. Most public meetings have been held virtually because of restrictions on in-person events. Public hearings and adoption are scheduled for February and March 2021. The MRA plan contains goals for land use policy that will foster the economic growth of the Village. The zoning code update is the opportunity to incorporate these goals into Village policy.

